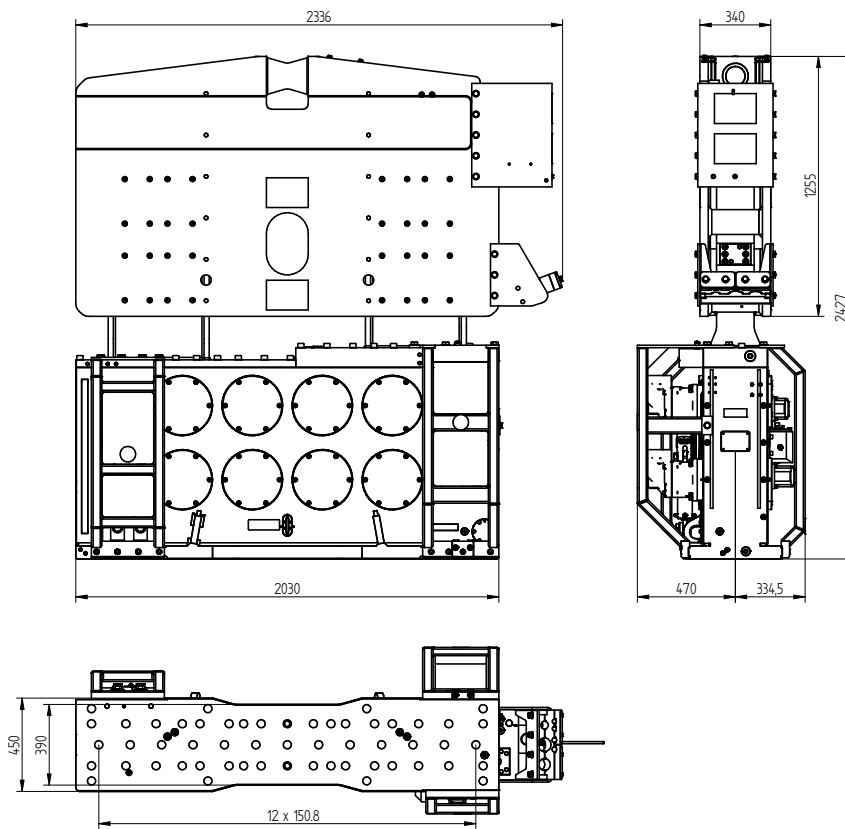


► ICE / PVE Vibrator Set

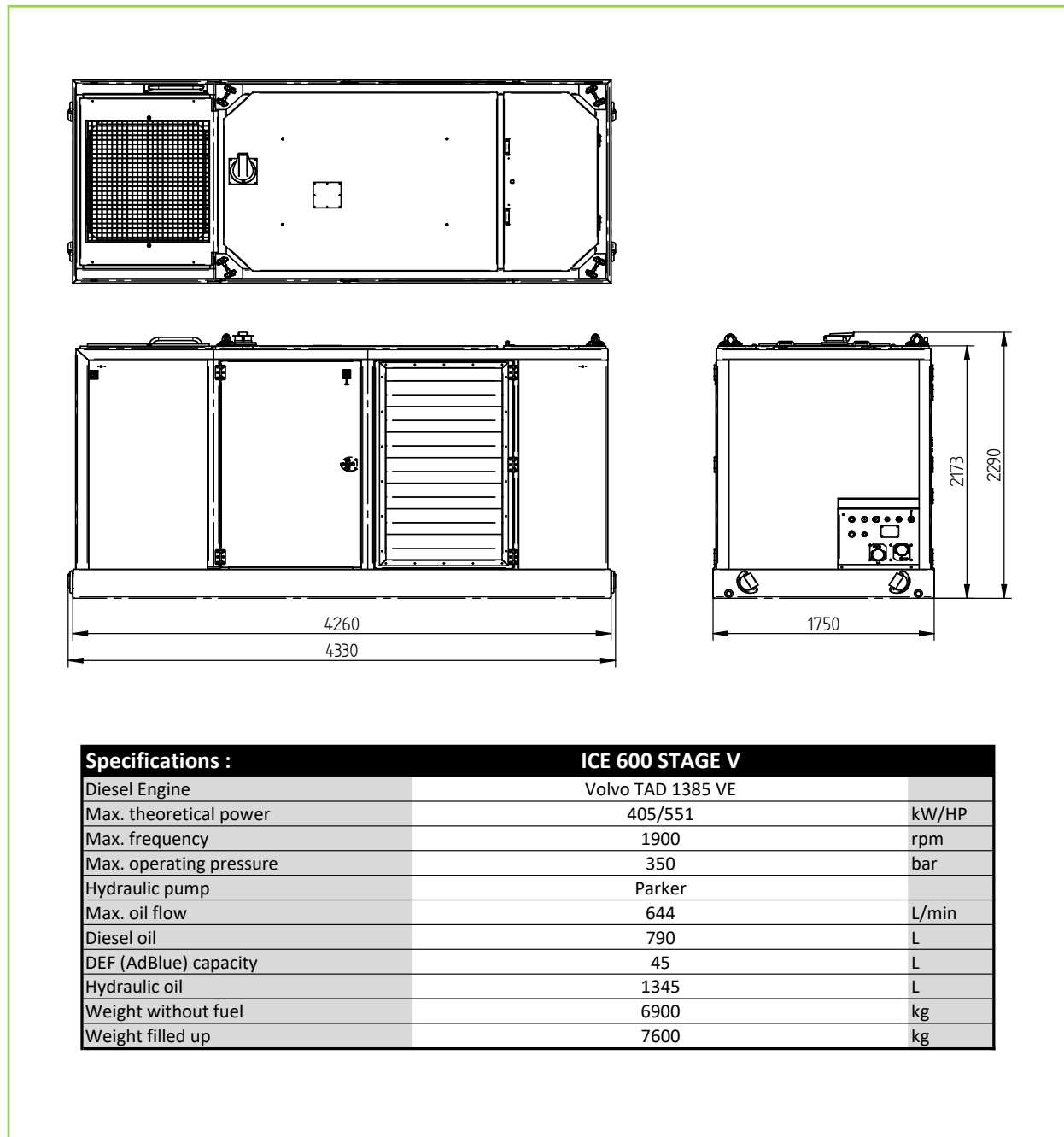
■ ICE 28 RF *Vibratory Hammer*



Specifications :		ICE 28RF	
Eccentric moment	0-28 kgm	Clamps:	
Max. centrifugal force	0-1600 kN	Sheet pile clamp	200TU
Max. frequency	2300 rpm	Transport weight per piece	1500 kg
Max. amplitude excl. 200TU	14 mm	Double clamps	100TC
Max. amplitude incl. 200TU	10,4 mm	Transport weight per piece	690 kg
Max. static line-pull	400 kN		
Max. pull-down	150 kN		
Max. operating pressure	350 bar	Powerpack:	
Max. oil flow	590 l/min	Model	600 series
Max. hydraulic power	344/468 kW/HP		
Forced lubrication	yes		
Dynamic weight excl. 200TU	3900 kg	Hose set:	
Dynamic weight incl. 200TU	5400 kg	Length	45 m
Total weight excl. 200TU & hoses	5900 kg	Transport weight (±)	1121 kg

► ICE / PVE Vibrator Set

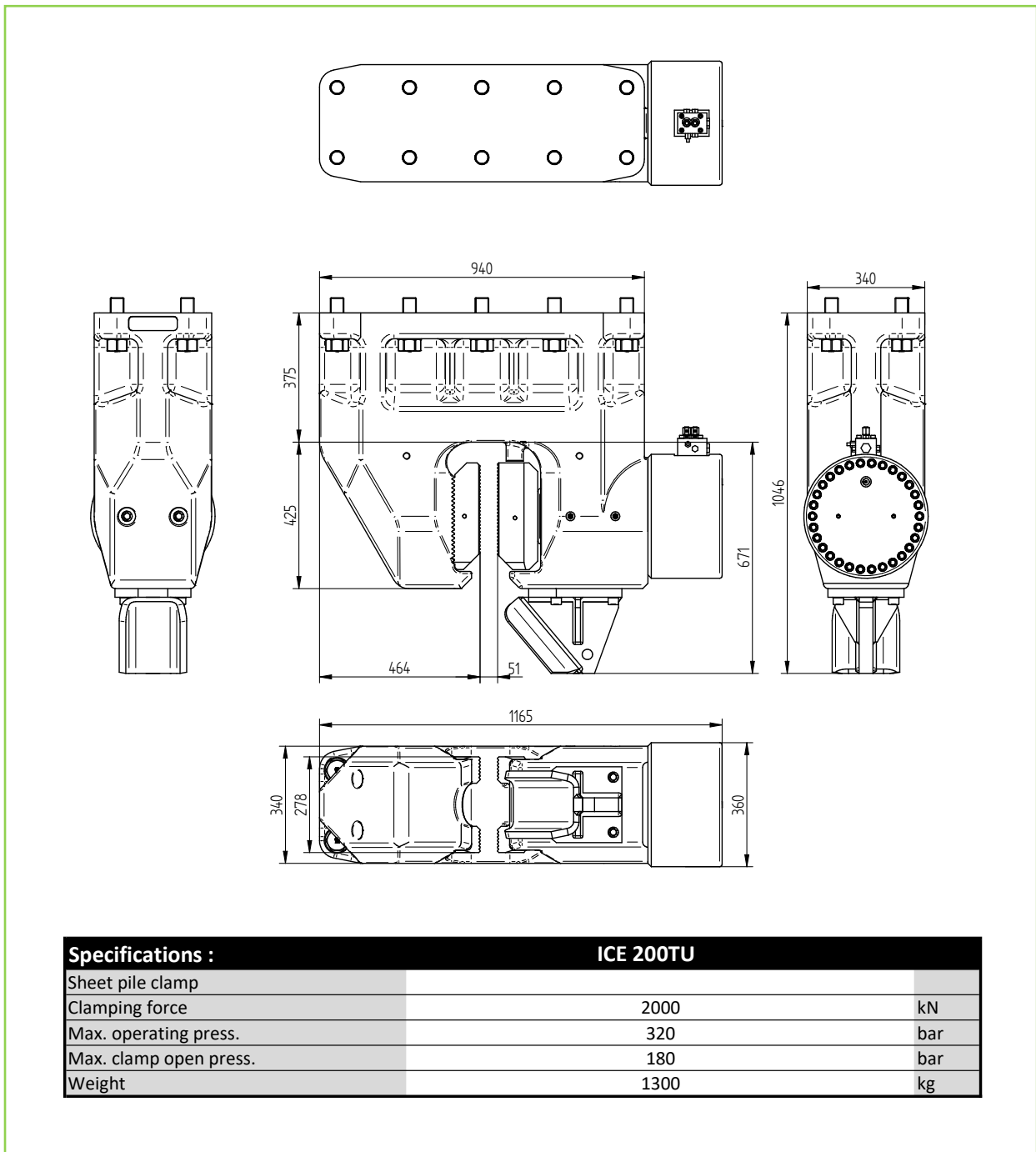
■ ICE 600 PP *Hydraulic Power Pack*



Specifications :	ICE 600 STAGE V	
Diesel Engine	Volvo TAD 1385 VE	
Max. theoretical power	405/551	kW/HP
Max. frequency	1900	rpm
Max. operating pressure	350	bar
Hydraulic pump	Parker	
Max. oil flow	644	L/min
Diesel oil	790	L
DEF (AdBlue) capacity	45	L
Hydraulic oil	1345	L
Weight without fuel	6900	kg
Weight filled up	7600	kg

► ICE / PVE Vibrator Set

■ ICE 200 TU *Universal Clamp*



Specifications :	ICE 200TU	
Sheet pile clamp		
Clamping force	2000	kN
Max. operating press.	320	bar
Max. clamp open press.	180	bar
Weight	1300	kg

