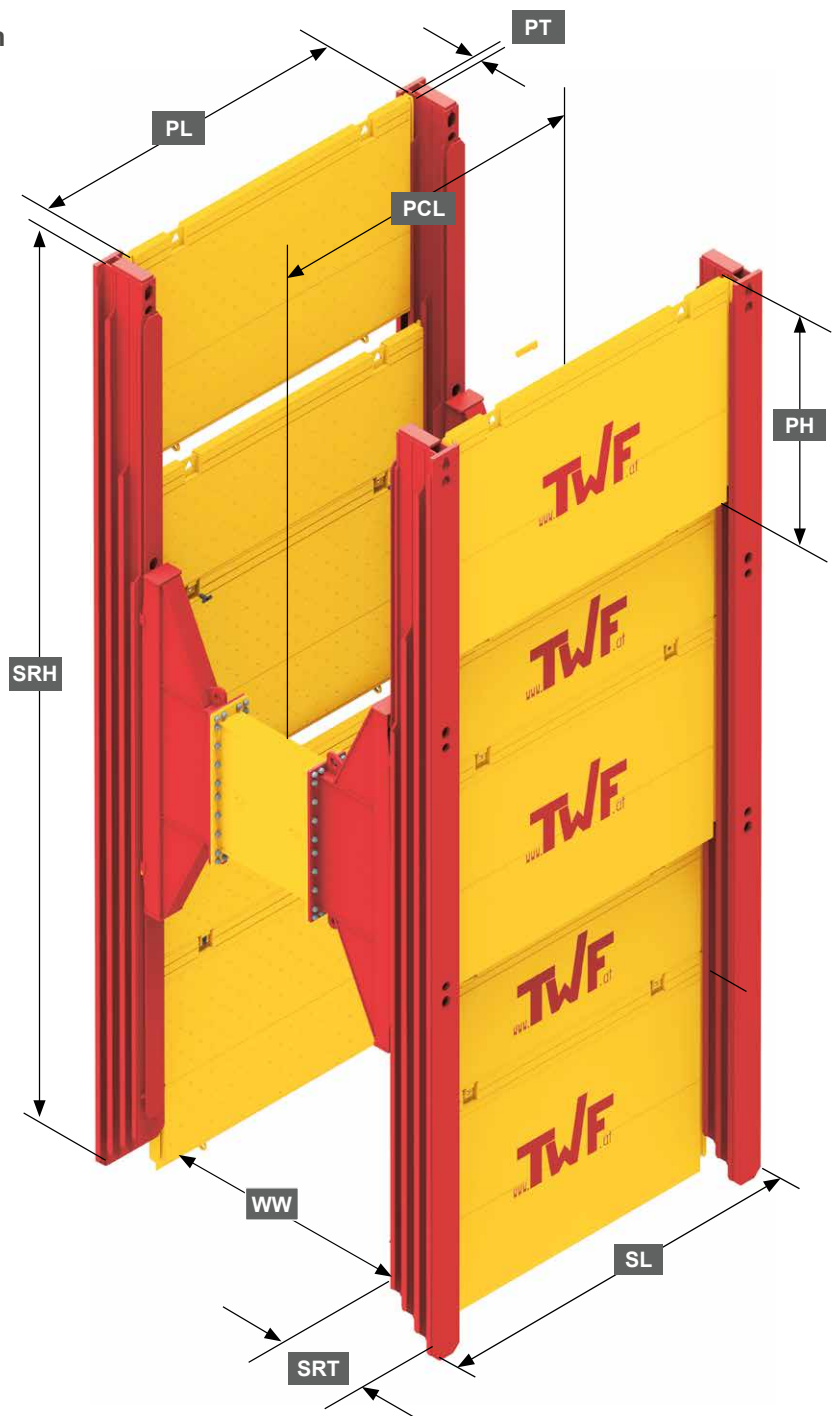


► TWF Trench Shoring Systems

■ Triple Slide Rail XXL

- Slide rail panels in **three guide rails** - for very deep construction projects
- Installation by **lower and cut method** in unstable soils - **easy dismantling**
- Crawler excavator: **50 t**
- Maximum trench depth: **10,00 m**
- Trench width: **3,04 - 13,64 m**
- Pipe clearance height: **5,50 m**



PL	Panel length
SRH	Slide rail height
WW	Working width
SRT	Slide rail thickness
SL	System length
PH	Panel height
PT	Panel thickness
PCL	Pipe clearance length

► For further information about slide rail panels see [page 28](#)



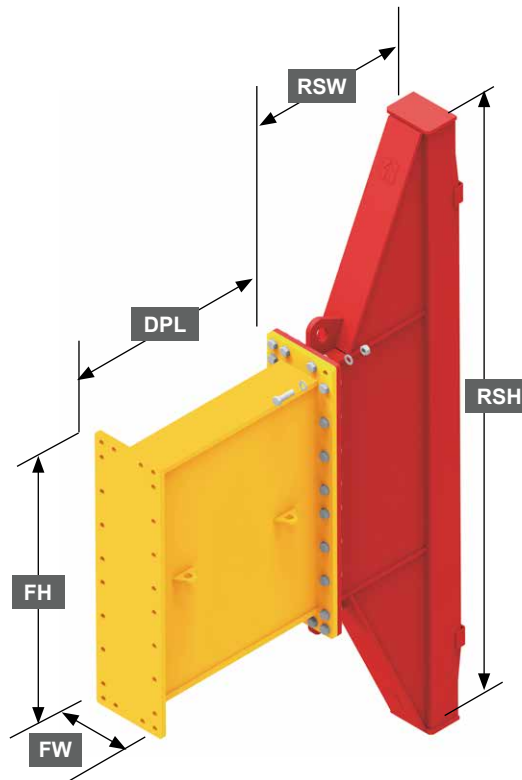
► Triple Slide Rail

Element	Slide rail height SRH (m)	Weight (kg)	Slide rail thickness SRT (mm)	Char. system resistance
Slide rail	10,00	4446	590	1858,0 kNm
Corner rail	10,00	3347	586	130,9* kN/m

* Slide rail force each side

■ Rolling Strut XXL

RSH	Rolling strut height
RSW	Rolling strut width
DPL	Distance piece length
FH	Flange height
FW	Flange width



Rolling strut - XXL

Height RSH (m)	3,66
Width RSW (m)	0,93
Flange width FW (mm)	454
Flange height FH (mm)	1635
Weight / RS-pair (kg)	2160
min. Working width WW (m)	1,86
max. Working width WW (m)	12,46

Distance piece - XXL

Length DPL (m)	0,25	0,50	0,75	1,00	2,00	3,00
Weight (kg)	417	518	618	723	1125	1528

