

KLEMM
Bohrtechnik

FOR SALE!



KLEMM KR 806-3F Hydraulic Drill Rig

› KLEMM Hydraulic drill rig KR 806-3F,
year 2016
about 3.300 working hours

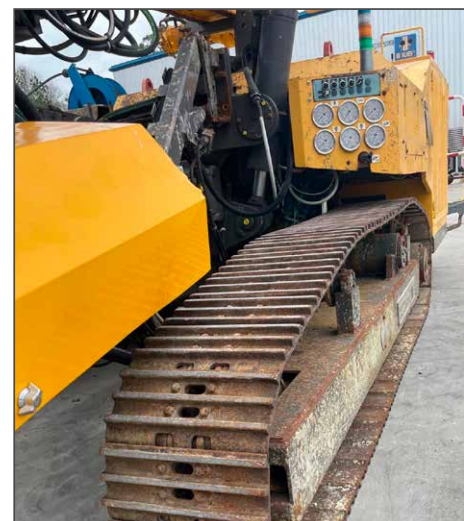
Deutz diesel engine TCD2012 L6 2V,
160kW Power, Tier 4i

Drill mast type KLEMM 202
Total length: 6200 mm
Useable length: 3000 mm

Rotary head KH22
Rotary head KH21

Water pump,
Remote control unit

**Condition: checked, tested
and maintained,
good working order**



Prior to Sales all machines will be **checked and tested** according to the **manufacturer's instructions**.

USED FOUNDATION EQUIPMENT